

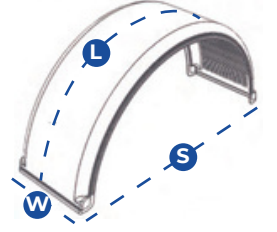


# Truck Mudguard Catalog

**Yıllarca** Kalite...  
Quality for **Years...**







### 42U1001

Mudguard, Striped, Smooth  
Çamurluk, Şeritli,Düz



Width / Genişlik	Span / Gerilme	Lenght / Uzunluk	Weight / Ağırlık
(W)450 mm	(S) 1350 mm	(L)2100 mm	3,75 kg



### 42U1002

Mudguard, Unstriped, Smooth  
Çamurluk, Şeritsiz, Düz



Width / Genişlik	Span / Gerilme	Lenght / Uzunluk	Weight / Ağırlık
(W)420 mm	(S) 1240 mm	(L)2000 mm	3,10 kg



### 42U1003

Mudguard, Unstriped, Smooth  
Çamurluk, Şeritsiz, Düz



Width / Genişlik	Span / Gerilme	Lenght / Uzunluk	Weight / Ağırlık
(W)450 mm	(S) 1300 mm	(L)2000 mm	3,60 kg



### 42U1014

Mudguard, Unstriped, Smooth  
Çamurluk, Şeritsiz, Düz



Width / Genişlik	Span / Gerilme	Lenght / Uzunluk	Weight / Ağırlık
(W)650 mm	(S) 1300 mm	(L)2100 mm	5,75 kg

## Mudguard/Çamurluk

**42U1004**

Mudguard, Striped, Slotted  
Çamurluk, Şeritli, Kanallı

Width / Genişlik

(W)460 mm

Span / Gerilme

(S) 1350 mm

Lenght / Uzunluk

(L)2100 mm

Weight / Ağırlık

4,25 kg

**42U1010**

Mudguard, Striped, Slotted  
Çamurluk, Şeritli, Kanallı

Width / Genişlik

(W)675 mm

Span / Gerilme

(S) 1350 mm

Lenght / Uzunluk

(L)2100 mm

Weight / Ağırlık

5,90 kg

**42U1011**

Mudguard, Striped, Slotted  
Çamurluk, Şeritli, Kanallı

Width / Genişlik

(W)650 mm

Span / Gerilme

(S) 1300 mm

Lenght / Uzunluk

(L)1920 mm

Weight / Ağırlık

6,00 kg

**42U1012**

Mudguard, Striped, Slotted  
Çamurluk, Şeritli, Kanallı

Width / Genişlik

(W)650 mm

Span / Gerilme

(S) 1300 mm

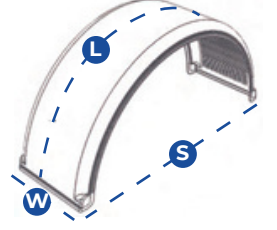
Lenght / Uzunluk

(L)2000 mm

Weight / Ağırlık

5,80 kg





### 42U1005

**Mudguard, Striped, Slotted**  
Çamurluk, Şeritli, Kanallı



Width / Genişlik	Span / Gerilme	Height / Yükseklik	Weight / Ağırlık
(W)470 mm	(S) 1300 mm	(L)2100 mm	4,00 kg



### 42U1015

**Mudguard, Striped, Slotted**  
Çamurluk, Şeritli, Kanallı



Width / Genişlik	Span / Gerilme	Height / Yükseklik	Weight / Ağırlık
(W)680 mm	(S) 1350 mm	(L)2100 mm	6,00 kg



### 42U1021

**Mudguard, Unstriped, Slotted**  
Çamurluk, Şeritsiz, Kanallı



Width / Genişlik	Span / Gerilme	Height / Yükseklik	Weight / Ağırlık
(W)300 mm	(S) 900 mm	(L)450 mm	2,85 kg



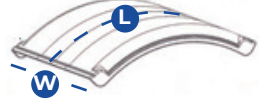
### 42U1023

**Mudguard, Unstriped, Slotted**  
Çamurluk, Şeritsiz, Kanallı



Width / Genişlik	Span / Gerilme	Height / Yükseklik	Weight / Ağırlık
(W)500 mm	(S) 900 mm	(L)420 mm	4,15 kg

## Half Mudguard/ Yarım Çamurluk

**42U1006**

Half Mudguard, Unstriped, Smooth  
Yarım Çamurluk, Şeritsiz, Düz



Width / Genişlik	Span / Gerilme	Lenght / Uzunluk	Weight / Ağırlık
(W)450 mm	-	(L)900 mm	1,55 kg

**42U1016**

Half Mudguard, Unstriped, Smooth  
Yarım Çamurluk, Şeritsiz, Düz



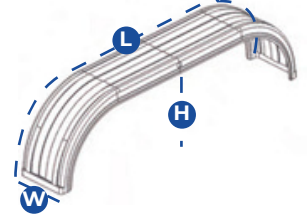
Width / Genişlik	Span / Gerilme	Lenght / Uzunluk	Weight / Ağırlık
(W)650 mm	-	(L)900 mm	2,35 kg

**42U1026**

Half Mudguard, Striped, Slotted  
Yarım Çamurluk, Şeritli, Kanallı



Width / Genişlik	Span / Gerilme	Lenght / Uzunluk	Weight / Ağırlık
(W)530 mm	-	(L)450 mm	0,90 kg



### 42U1007

**Mudguard, 2 Axles, Single Tire**  
Çamurluk, 2 Dingil, Tek Teker

Width / Genişlik

(W)480 mm

Height / Yükseklik

(H) 700 mm

Lenght / Uzunluk

(L)2600 mm

Weight / Ağırlık

10,00 kg



### 42U1017

**Mudguard, 2 Axles, Double Tire**  
Çamurluk, 2 Dingil, Çift Teker

Width / Genişlik

(W)680 mm

Height / Yükseklik

(H) 700 mm

Lenght / Uzunluk

(L)2600 mm

Weight / Ağırlık

11,75 kg



### 42U1008

**Mudguard, 3 Axles, Single Tire**  
Çamurluk, 3 Dingil, Tek Teker

Width / Genişlik

(W)480 mm

Height / Yükseklik

(H) 700 mm

Lenght / Uzunluk

(L)3950 mm

Weight / Ağırlık

16,25 kg



### 42U1018

**Mudguard, 3 Axles, Double Tire**  
Çamurluk, 3 Dingil, Çift Teker

Width / Genişlik

(W)680 mm

Height / Yükseklik

(H) 700 mm

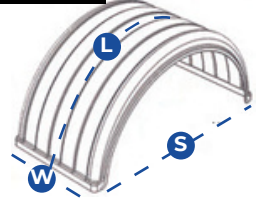
Lenght / Uzunluk

(L)3950 mm

Weight / Ağırlık

19,75 kg



**42U1025**

Mudguard, Unstriped, Slotted  
Çamurluk, Şeritsiz, Kanallı



Width / Genişlik

Span / Gerilme

Lenght / Uzunluk

Weight / Ağırlık

(W)530 mm

(S) 1000mm

(L)1600 mm

3,30 kg

**42U1027**

ATEGO, Unstriped, Slotted  
ATEGO, Şeritsiz, Kanallı



Width / Genişlik

Span / Gerilme

Lenght / Uzunluk

Weight / Ağırlık

(W)620 mm

(S) 1130mm

(L)1750 mm

5,00 kg

**42U1301**

Mudguard, Unstriped, Wedge MAN  
Çamurluk, Şeritsiz, Takozlu MAN



Width / Genişlik

Span / Gerilme

Lenght / Uzunluk

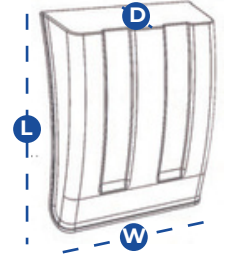
Weight / Ağırlık

(W)680 mm

(S) 1360 mm

(L)2250 mm

8,85 kg



### 42K 1001

Mudguard, Short  
Çamurluk, Kısa



width / Genişlik	Lenght / Uzunluk	Weight / Ağırlık
(W)490 mm	(L)410 mm	1,50 kg



### 42K 1002

Mudguard, Middle  
Çamurluk, Orta



width / Genişlik	Lenght / Uzunluk	Weight / Ağırlık
(W)490 mm	(L)510 mm	1,75 kg



### 42K 1003

Mudguard, Long  
Çamurluk, Uzun



width / Genişlik	Lenght / Uzunluk	Weight / Ağırlık
(W)490 mm	(L)610 mm	2,25 kg



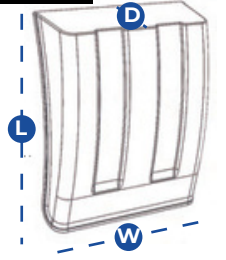
### 42F 1001

Mudguard, Short  
Çamurluk, Kısa



width / Genişlik	Lenght / Uzunluk	Weight / Ağırlık
(W)470 mm	(L)520 mm	1,70 kg

## Mudguard/Çamurluk

**42S1001**

Mudguard, Short  
Çamurluk, Kısa



Width / Genişlik

Lenght / Uzunluk

Weight / Ağırlık

(W)450 mm

(L)640 mm

1,45 kg

**42S1002**

Mudguard, Short  
Çamurluk, Kısa



Width / Genişlik

Lenght / Uzunluk

Weight / Ağırlık

(W)450 mm

(L)640 mm

1,40 kg

**42S1003**

Mudguard, Long  
Çamurluk, Uzun



Width / Genişlik

Lenght / Uzunluk

Weight / Ağırlık

(W)450 mm

(L)735 mm

1,60 kg

**42F 1002**

Mudguard, Long  
Çamurluk, Uzun



Width / Genişlik

Lenght / Uzunluk

Weight / Ağırlık

(W)470 mm

(L)620 mm

1,90 kg



**Trailer Equipment**  
**Dorse Ekipmanları**

## Trailer Equipment / Dorse Ekipmanları



**42U2032**

**Fire Extinguisher Box, 6-9 Kg**  
Yangın Tüþü Dolabı, 6-9 Kg



**Width / Geniřlik**

(W)315 mm

**Depht / Derinlik**

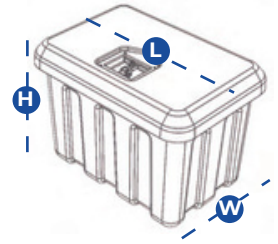
(D) 200 mm

**Lenght / Uzunluk**

(L)680 mm

**Weight / Ağırlık**

3,05 kg



### 42U2034

Plastic Tool Box 40 cm,  
Chrome Nickel Box Lock  
Plastik Takım Dolabı 40 cm  
Krom Nikel Dolap Kilidi

40 cm



Width / Genişlik

Height / Yükseklik

Length / Uzunluk

Weight / Ağırlık

(W)370 mm

(S) 370 mm

(L)400 mm

3,10 kg



### 42U2035

Plastic Tool Box 50 cm,  
Chrome Nickel Box Lock  
Plastik Takım Dolabı 50 cm  
Krom Nikel Dolap Kilidi

50 cm



Width / Genişlik

Height / Yükseklik

Length / Uzunluk

Weight / Ağırlık

(W)370 mm

(S) 370 mm

(L)500 mm

4,50 kg



### 42U2036

Plastic Tool Box 60 cm,  
Chrome Nickel Box Lock  
Plastik Takım Dolabı 60 cm  
Krom Nikel Dolap Kilidi

60 cm



Width / Genişlik

Height / Yükseklik

Length / Uzunluk

Weight / Ağırlık

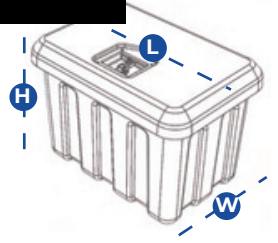
(W)500 mm

(S) 450 mm

(L)600 mm

6,55 kg

## Trailer Equipment / Dorse Ekipmanları



80 cm



### 42U2038

Plastic Tool Box 80 cm,  
Chrome Nickel Box Lock

Plastik Takım Dolabı 80 cm  
Krom Nikel Dolap Kilidi

Width / Genişlik

(W)500 mm

Height / Yükseklik

(S) 450 mm

Lenght / Uzunluk

(L)800 mm

Weight / Ağırlık

8,85 kg

### 42U2039

Plastic Tool Box 110 cm,  
Chrome Nickel Box Lock

Plastik Takım Dolabı 110 cm  
Krom Nikel Dolap Kilidi

110 cm



Width / Genişlik

(W)500 mm

Height / Yükseklik

(S) 450 mm

Lenght / Uzunluk

(L)1100 mm

Weight / Ağırlık

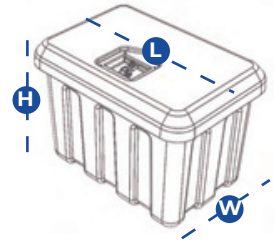
13,35 kg



42U2110



42U2109



### 42U2134

Plastic Tool Box 40 cm  
(Rotation)

Plastik Takım Dolabı 40 cm  
(Rotasyon)

40 cm



Width / Genişlik

Height / Yükseklik

Length / Uzunluk

Weight / Ağırlık

(W)400 mm

(S) 470 mm

(L)400 mm

6,10 kg



### 42U2135

Plastic Tool Box 50 cm  
(Rotation)

Plastik Takım Dolabı 50 cm  
(Rotasyon)

50 cm



Width / Genişlik

Height / Yükseklik

Length / Uzunluk

Weight / Ağırlık

(W)470 mm

(S) 470 mm

(L)500 mm

6,30 kg



### 42U2136

Plastic Tool Box 60 cm  
(Rotation)

Plastik Takım Dolabı 60 cm  
(Rotasyon)

60 cm



Width / Genişlik

Height / Yükseklik

Length / Uzunluk

Weight / Ağırlık

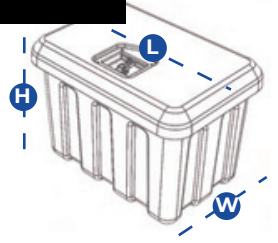
(W)470 mm

(S) 470 mm

(L)600 mm

7,55 kg





### 42U2137

Plastic Tool Box 70 cm  
(Rotation)

Plastik Takım Dolabı 70 cm  
(Rotasyon)

70 cm



Width / Genişlik

Height / Yükseklik

Length / Uzunluk

Weight / Ağırlık

(W)500 mm

(S) 470 mm

(L)700 mm

8,45 kg



### 42U2138

Plastic Tool Box 80 cm  
(Rotation)

Plastik Takım Dolabı 80 cm  
(Rotasyon)

80 cm



Width / Genişlik

Height / Yükseklik

Length / Uzunluk

Weight / Ağırlık

(W)470 mm

(S) 470 mm

(L)800 mm

9,35 kg



### 42U2139

Plastic Tool Box 100 cm  
(Rotation)

Plastik Takım Dolabı 100 cm  
(Rotasyon)

100 cm



Width / Genişlik

Height / Yükseklik

Length / Uzunluk

Weight / Ağırlık

(W)470 mm

(S) 470 mm

(L)1000 mm

13,25 kg



### 42U2140

Plastic Tool Box 120 cm  
(Rotation)

Plastik Takım Dolabı 120 cm  
(Rotasyon)

120 cm



Width / Genişlik

Height / Yükseklik

Length / Uzunluk

Weight / Ağırlık

(W)470 mm

(S) 470 mm

(L)1200 mm

17,75 kg

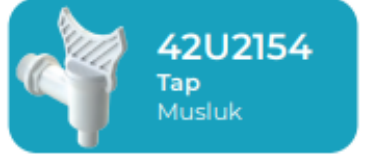
## Trailer Equipment / Dorse Ekipmanları



**42U2152**

Plastic Water Tank 30 lt  
Plastik Su Tankı 30 lt

30 lt



**42U2154**  
Tap  
Musluk



**42U2155**  
Soap Dispenser  
Sabunluk



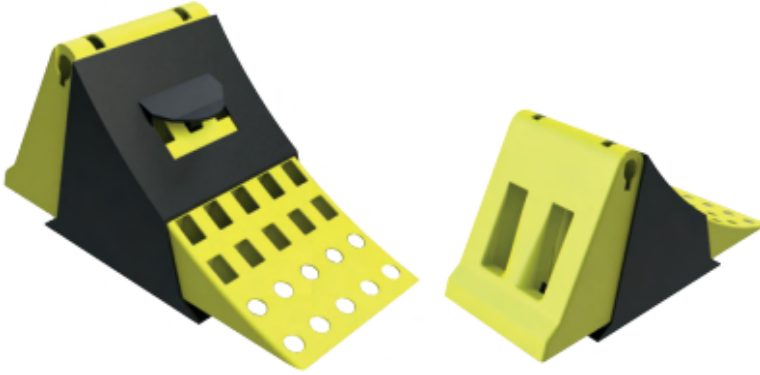
**42U2153**

Plastic Water Tank 50 lt  
Plastik Su Tankı 50 lt

50 lt



## Trailer Equipment / Dorse Ekipmanları



### 42U2040

#### Wheel Chock With Hanger

Teker Takozu Askılı



Width / Genişlik

(W)209 mm

Height / Yükseklik

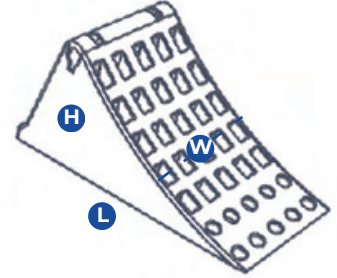
(D) 243 mm

Lenght / Uzunluk

(L)484 mm

Weight / Ağırlık

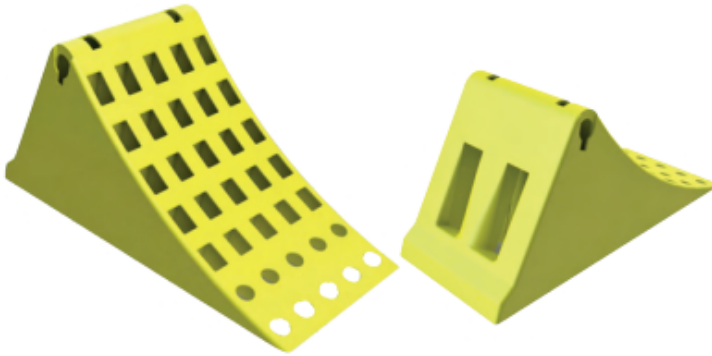
2,15 kg



### 42U2042

#### Wheel Chock Hanger

Teker Takozu Askısı



### 42U2041

#### Wheel Chock

Teker Takozu



Width / Genişlik

(W)203 mm

Height / Yükseklik

(D) 225 mm

Lenght / Uzunluk

(L)484 mm

Weight / Ağırlık

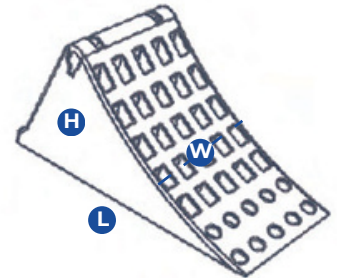
1,90 kg



### 42U2043

#### Wheel Chock Hanger

Teker Takozu Askısı





**Connection Equipment**  
**Bağlantı Ekipmanları**

## Connection Equipment / Bağlantı Ekipmanları

**42U2101****Adjustable Clamp For Mudguard (Galvanized)**  
Ayarlanabilir Çamurluk Kelepçesi (Galvanize)**42U2102****Adjustable Clamp For Mudguard (Plastic)**  
Ayarlanabilir Çamurluk Kelepçesi (Plastik)**42U2103** **530 mm****Stay for Mudguard - Short**  
Çamurluk Borusu - Kısa**42U2104** **740 mm****Stay for Mudguard - Long**  
Çamurluk Borusu - Uzun**42U2105** **530 mm****Stay for Aluminium Bar Short  
Adjustable Side Protection**  
Alüminyum Bariyer Ayağı Kısa  
Ayarlanabilir Yan Korkuluk**42U2106** **730 mm****Stay for Aluminium Bar Long  
Adjustable Side Protection**  
Alüminyum Bariyer Ayağı Uzun  
Ayarlanabilir Yan Korkuluk**42U2100****Clamp For Mudguard (Plastic)**  
Çamurluk Kelepçesi Plastik**42U2115****Corner Bracket**  
Köşebent



**Truck Group**  
**Çekici Grupları**

MERCEDES BENZ AXOR



42B1146

Front - Left / Ön - Sol

OEM : 9305200019



Front - Right / Ön - Sağ

OEM : 9305200119

42B1147



42B1148

Rear - Left / Arka - Sol

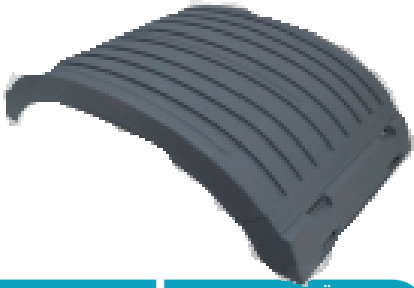
OEM : 9305200020



Rear - Right / Arka - Sağ

OEM : 9305200120

42B1149



42B1150

Upper - Üst

OEM : 9305200007



Rubber Strap- Gergi Lastığı

OEM : 9415220167

42B1161



42B2142

Foot Step Left- Basamak Sol

OEM : 9446660101



Foot Step-Right Basamak Sağ

OEM : 9446660201

42B2143

MERCEDES BENZ ACTROS



42B1154

Front - Left / Ön - Sol

OEM : 960520019



Front - Right / Ön - Sağ

42B1155

OEM : 960520019



42B1156

Rear - Left / Arka - Sol

OEM : 9605200420



Rear - Right / Arka - Sağ

42B1156

OEM : 9605200420



42B1157

Upper - Üst

OEM : 9605200107



Rubber Strap - Gergi Lastığı

42B1163

OEM : 9605200067



DAF CF / FX / UNDER CABINET



42D1102

Front - Left / Ön - Sol

OEM : 1659253



Front - Right / Ön - Sağ

OEM : 1659254

42D1101



42D1103

Front-Rear-Left / Ön-Arka-Sol

OEM : 1328934



Front-Rear-Right / Ön-Arka-Sağ

OEM : 1328934

42D1103



42D1105

Upper - Üst

OEM : 1328935



Rubber Strap- Gergi Lastığı

OEM : 1340450

42D1113

DAF XF / FX



42D1108

Front - Left / Ön - Sol

OEM : 1875549



Front - Right / Ön - Sağ

OEM : 1875550

42D1107



42D1110

Rear - Left / Arka - Sol

OEM : 1875554



Rear - Right / Arka - Sağ

OEM : 1875553

42D1109



42D1106

Upper - Üst

OEM : 1875551



Rubber Strap - Gergi Lastığı

OEM : 1927847

42D1112

## FORD CARGO

---



42F 1102

Front-Rear-Left / Ön-Arka-Sol

OEM : CC4616314



Front-Rear-Left / Ön-Arka-Sol

OEM : CC4616314

42F 1102



42F 1101

Upper - Üst

OEM : CC4616315

MAN TGA



**42M1102** Front - Left / Ön - Sol  
OEM : 81664100293



Front - Right / Ön - Sağ **42M1103**  
OEM : 81664100294



**42M1104** Rear - Left / Arka - Sol  
OEM : 81664100173



Rear - Right / Arka - Sağ **42M1105**  
OEM : 81664100172



**42M1101** Upper - Üst  
OEM : 81664106086



Rubber Strap- Gergi Lastiği **42M1126**  
OEM : 81664100226

MAN TGX- TGA



42M1107

Front - Left / Ön - Sol

OEM : 81664106573



Front - Right / Ön - Sağ

OEM : 81664106574

42M1108



42M1109

Rear - Left / Arka - Sol

OEM : 81664106625



Rear - Right / Arka - Sağ

OEM : 81664106625

42M1109



42M1106

Upper - Üst

OEM : 81664106606



Rubber Strap- Gergi Lastığı

OEM : 81664400192

42M1125

MAN TGX- TGA



520 mm

42M1207

Front-Rear-Left / Ön-Arka-Sol

OEM : 81664106634



520 mm

Front-Rear-Left / Ön-Arka-Sol

OEM : 81664106634

42M1207



520 mm

42M1206

Rear - Left / Arka - Sol

OEM : 81664106612



Rubber Strap- Gergi Lastiđi

OEM : 81664400192

42M1125

MAN TGX- TGA / **UNDER CABINET**



**BROAD CHEEK**

**42M1202**

Rear-Right/ Arka-Sağ

OEM : 81612100674



**BROAD CHEEK**

**42M1203**

Rear - Left / Arka - Sol

OEM : 81612100673



**THIN CHEEK**

**42M1204**

Rear - Right / Arka - Sağ

OEM : 81664100363



**THIN CHEEK**

**42M1205**

Rear - Left / Arka - Sol

OEM : 81664100362

## RENAULT PREMIUM / MAGNUM



**42V113**

Rubber Strap- Gergi Lastığı

OEM : 1079981



Upper / Üst

**42R1102**

OEM : 7420936768

OEM : 7420726748



**42R1101**

Rear-Front-Left / Arka-Ön Sol

OEM : 7420583488

OEM : 7420771757



Rear-Front-Right / Arka-Ön Sağ

**42R1101**

OEM : 7420583488

OEM : 7420771757



**42R1123**

Rubber Strap- Gergi Lastığı

OEM : 7420498623



RENAULT PREMIUM / T



42R1103

Front - Left / Ön - Sol

OEM : 7421094391

OEM : 7422087684



42R1103

Front - Right / Ön - Sağ

OEM : 7421094391

OEM : 7422087684



42R1104

Rear - Left / Arka - Sol

OEM : 7421094394



42R1104

Rear - Right / Arka - Sağ

OEM : 7421094394



HIGH TYPE

42R1105

Upper - Üst

OEM : 7421094387



LOW TYPE

42R1106

Upper - Üst

OEM : 7421094388



42R1124

Rubber Strap - Gergi Lastığı

OEM : 7421094457

## VOLVO FH / FM

---



42V1113

Rubber Strap- Gergi Lastığı

OEM : 1079981



Upper / Üst

OEM : 3171391

42V 1102



42V 1101

Rear-Front-Left / Arka-Ön-Sol

OEM : 20392599



Rear-Front-Right / Arka-Ön-Sağ

OEM : 20392599

42V 1101



42V1112

Rubber Strap- Gergi Lastığı

OEM : 20498623

VOLVO FH



**42V 1103**

Front - Left / Ön - Sol

OEM : 22087684

OEM : 21094391



Front - Right / Ön - Sağ

**42V 1103**

OEM : 22087684

OEM : 21094391



**42V1104**

Rear - Left / Arka - Sol

OEM : 21094394



Rear - Right / Arka - Sağ

**42V1104**

OEM : 21094394



**HIGH TYPE**

**42V1105**

Upper - Üst

OEM : 21094387



**LOW TYPE**

Upper - Üst

**42V1106**

OEM : 21094388



**42R1124**

Rubber Strap- Gergi Lastığı

OEM : 7421094457

SCANIA / UNDER CABINET



42S1103

Rear Right-Front Left / Arka Sağ - Ön Sol

OEM : 1485485



Rear Left-Front Right / Arka Sol - Ön Sağ

OEM : 1485486

42S1102



42S1101

Upper / Üst

OEM : 1395276



Upper / Üst

OEM : 1357602

42S1106



42S1105

Rear Left-Front Right / Arka Sol - Ön Sağ

OEM : 1357599



Rear Right-Front Left / Arka Sağ - Ön Sol

OEM : 1357600

42S1104



42S1107

Rubber Strap- Gergi Lastığı

OEM : 1383858

## MUDFLAP / PAÇALIK

### SMOOTH / DÜZ

ID / Model	Size / Ebat
42MF 101	35 X 30 X 04
42MF 102	45 X 40 X 04
42MF 103	40 X 50 X 04
42MF 104	25 X 60 X 04
42MF 105	30 X 60 X 04
42MF 106	40 X 60 X 04
42MF 107	45 X 60 X 04
42MF 108	50 X 60 X 04
42MF 109	35 X 210 X 04
42MF 110	35 X 240 X 04



### EMBOSED / KABARTMALI

ID / Model	Size / Ebat
42MF201	45 X 40
42MF202	19 X 65
42MF203	25 X 65
42MF204	30 X 65
42MF205	36 X 65
42MF206	40 X 65
42MF207	35 X 66 X 05
42MF208	28 X 120 X 05
42MF209	35 X 240 X 05
42MF210	30 X 240 X 06
42MF211	35 X 240 X 06



### ANTI-SPRAY / ANTI SPREY

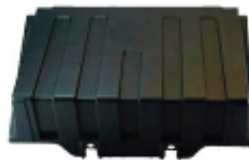
ID / Model	Size / Ebat
42MF301	42 X 72
42MF302	61 X 63
42MF303	61 X 81
42MF304	10 X 310



BATTERY COVER / AKÜ KAPAĞI



**42BC1001**  
OEM : 9605410705



**42BC 1006**  
OEM : 81418606090



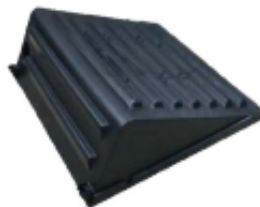
**42BC1002**  
OEM : 9415410003



**42BC 1007**  
OEM : BC4610A659AD



**42BC1003**  
OEM : 9605410905



**42BC 1008**  
OEM : 7420518312



**42BC1004**  
OEM : 3755410103



**42BC 1009**  
OEM : 7420518311



**42BC1005**  
OEM : 81418600274



**42EC1001**  
OEM : 1496659

## RUBBER STRAP / GERGI LASTIČI

		
<b>42S1108</b> OEM : 1529552	<b>42D1111</b> OEM : 3874260040	<b>42V1113</b> OEM : 1079981
		
<b>42S1107</b> OEM : 1383858	<b>42R1126</b> OEM : 5001856184	<b>42R1125</b> OEM : 5001842757
		
<b>42R1124</b> OEM : 7421094457	<b>42R1123-42V1112</b> OEM : 7420498623 OEM : 20498623	<b>42M1126</b> OEM : 81664100226
		
<b>42M1125</b> OEM : 81664400192	<b>42B1162</b> OEM : 9415220067	<b>42D1112</b> OEM : 1927847
		
<b>42B1163</b> OEM : 9605200067	<b>42B1161</b> OEM : 9415220167	<b>42D1113</b> OEM : 1340450

PVC PROFILE / PVC PROFİL



**42U2802**  
Co-Ex Pvc Profile 21 mm (3,2 mt. / 5 mt.)



**42U2806**  
Co-Ex Pvc Profile 55 mm (3,2 mt. / 5 mt.)



**42U2803**  
Co-Ex Pvc Profile 32 mm (3,2 mt. / 5 mt.)



**42U2807**  
Co-Ex Pvc Profile 65 mm (3,2 mt. / 5 mt.)



**42U2804**  
Co-Ex Pvc Profile 42 mm (3,2 mt. / 5 mt.)



**42U2808**  
Co-Ex Pvc Profile 85 mm (3,2 mt. / 5 mt.)



**42U2805**  
Co-Ex Pvc Profile 47 mm (3,2 mt. / 5 mt.)



**42U2809**  
Co-Ex Pvc Profile 105 mm (3,2 mt. / 5 mt.)



**Yıllarca** Kalite...  
Quality for **Years...**

